



2015 Javelin National Championships and 2015 420 North Island Championships

Friday 6th February to Sunday 8th February 2015

Takapuna Boating Club

The Organising Authority is the Takapuna Boating Club, (TBC),
in association with the NZ Javelin Association and the NZ 420 Association

NOTICE OF RACE

1 RULES

- 1.1 The regatta will be governed by the rules as defined in *The Racing Rules of Sailing*.
- 1.2 The Yachting New Zealand Safety Regulations Part 1 shall apply. Refer;
<http://www.yachtingnz.org.nz/racing/safety-regulations>
- 1.3 Under rule 86, *Changes to The Racing Rules* the following racing rules will be changed as follows:
 - Rules 35, A4 and A5 will be changed to state that boats still racing but failing to finish within 15 minutes after the first boat sails the course and finishes will be given a finishing position based on the last mark they rounded. Their score will be greater than any boat who rounded further marks or who finished,
 - For the Javelin class, rule 44.1 will be changed so that the Two-Turns Penalty is replaced by the One-Turn Penalty
 - For the 420 class, racing rule 42, *Propulsion* will be changed to allow 420's to pump, rock and ooch as permitted by rule C.1.2 of the 420 Class Rules,
 - Rules A4 and A5 will be changed to state that a boat starting later than 4 minutes after her starting signal will be scored Did Not Start.

The changes will appear in full in the Sailing Instructions. The Sailing Instructions may also change other racing rules.

- 1.4 For protests where only a Rule of Part 2, *When Boats Meet*, or Rule 31, *Touching a Mark* is alleged to have been broken an arbitration hearing will be offered prior to any formal hearing. The arbitration process and penalties applied will be in accordance with Yachting New Zealand Regulation 4.5.5, *Arbitration*.

2 ADVERTISING

Boats may be required to display advertising chosen and supplied by the organizing authority.

3 ELIGIBILITY AND ENTRY

3.1 The regatta is open to boats of the Javelin and International 420 Classes.

3.2 Eligible boats may enter by completing the attached Entry Form and either;

- i. sending it together with the required fee, to
The Manager,
Takapuna Boating Club,
PO Box 33 062,
Takapuna,
Auckland 0740, or
- ii. emailing it to
sailing@takapunaboating.org.nz
and depositing the required entry fee into the TBC bank account number
12 - 3109 - 0044465 - 02.
Please provide the following details with your payment;
Particulars: class/event, **Code:** sail-no, **Reference:** skippers name,

by 1700 hours on Wednesday, 4th February, 2015.

3.3 Late entries may be accepted up until 1100hrs on Friday 6th February, 2015, at the discretion of the Organising Authority.

3.4 To be eligible to compete in this event each competitor (helmsperson and crew) shall be a financial member of a club recognised by the competitor's national authority.

3.5 Each competitor (helmsperson and crew) shall be a current financial member of their Class Association.

3.6 The following documents must accompany the Entry Form;

- i. proof of yacht club membership,
- ii. proof of Class Association membership,
- iii. measurement certificate for boat being entered, where applicable.

4 CLASSIFICATION

There are no classification requirements in accordance with RRS 79.

5 FEES

5.1 The required entry fee is \$150.

6 SCHEDULE**6.1** *Registration:*Friday 6th February, 2015

From 0900 to 1100, at the Takapuna Boating Club.

6.2 *Briefing:*Friday 6th February, 2015

At 1030.

6.3 *Dates of racing:*

The event shall consist of a series of up to 10 races – (refer schedule below).

Day	Date	Time of First Warning Signal	Number of Races
Day 1	Fri 6 th February	1200	3
Day 2	Sat 7 th February	1100	4
Day 3	Sun 8 th February	1100	3

6.4 Races may be sailed back-to-back.**6.5** On Sunday 8th February, 2015 no warning signal will be made after 1530 hours.**8 MEASUREMENTS****8.1** Spot measurement and safety checks may be conducted at any time throughout the regatta**8.2** Beach trolleys shall be prominently marked with the boat's sail number.*(a) Javelin Class***8.3** All sails that are new since the 2014 Nationals shall require measurement.**8.4** New boats may be required to submit proof of holding a valid measurement certificate at registration.*(b) 420 Class***8.3** Each boat shall produce a valid measurement certificate at registration. In addition, spot measurement and safety checks may be conducted at any time throughout the regatta**9 SAILING INSTRUCTIONS**

The sailing instructions will be available at registration at the Takapuna Boating Club.

10 VENUE**10.1** Appendix A shows the location of the regatta venue.**10.2** Appendix B shows the approximate location of the racing area.

11 THE COURSES

The courses to be sailed will be Windward/Leeward and/or Trapezoid.

12 PENALTY SYSTEM

12.1 Appendix P may apply.

12.2 For the Javelin class, rule 44.1 will be changed so that the Two-Turns Penalty is replaced by the One-Turn Penalty

13 SCORING

(a) *Javelin National Championships*

13.1 5 races are required to be completed to constitute a series.

13.2 (a) When fewer than 6 races have been completed, a boat's series score will be the total of her race scores.

(b) When 6 or more races have been completed, a boat's series score will be the total of her race scores excluding her worst score.

(b) *420 North Island Championships*

13.3 4 race is required to be completed to constitute a series.

13.4 (a) When fewer than 5 races have been completed, a boat's series score will be the total of her race scores.

(b) When 5 or more races have been completed, a boat's series score will be the total of her race scores excluding her worst score.

14 SUPPORT BOATS

14.1 All support boats must register with the Organising Authority at registration and nominate the boat(s) they support.

14.2 Team leaders, coaches, and other support personnel shall comply with NOR 15.

15 PROHIBITED ANCHORING AREA

15.1 Boats associated with the championship and registered support boats shall comply with the New Zealand Government Regulation "Submarine Cables and Pipelines Protection Act 1996". This regulation prohibits anchoring in the area shaded in the No Anchoring area in Appendix 2 and defined on charts NZ532 and NZ5322.

15.2 Any boat or support craft breaking NOR 15.1 will be subject to a hearing resulting in a report to their National Authority and ISAF. As a consequence, a competitor associated with the coach of the support craft may be disqualified from the race closest to the time of the infringement.

16 LAUNCHING AND STORAGE

- 16.1 Unless otherwise directed by the Organising Authority, all competing boats and equipment shall be launched and retrieved from Takapuna Beach between the public boat ramp and the Takapuna Boating Club clubhouse.
- 16.2 Boats shall not be launched from the public boat ramp.
- 16.3 Boat trolleys shall not be left on the public boat ramp.
- 16.3 Boats may be kept on the Northern Reserve adjacent to the Takapuna Boating Club boatshed.

17 RADIO COMMUNICATION

Except in an emergency, a boat shall neither make radio transmissions while racing nor receive radio communications not available to all boats. This restriction also applies to mobile telephones.

18 PRIZES

Prizes may be given at the discretion of the Organising Authority or 420 or Javelin Class Association.

19 DISCLAIMER OF LIABILITY

Competitors participate in the regatta entirely at their own risk. See rule 4, Decision to Race. The organizing authority will not accept any liability for material damage or personal injury or death sustained in conjunction with or prior to, during, or after the regatta.

20 INSURANCE

Each participating boat shall be insured with valid third-party liability insurance with a minimum cover of \$500k NZD per incident or the equivalent.

21 FURTHER INFORMATION

For further information please contact;

Dave West

Takapuna Boating Club
The Strand
Takapuna
Auckland

Takapuna Boating Club
PO Box 33062
Takapuna
Auckland 0740

Phone: +64 9 489 6941

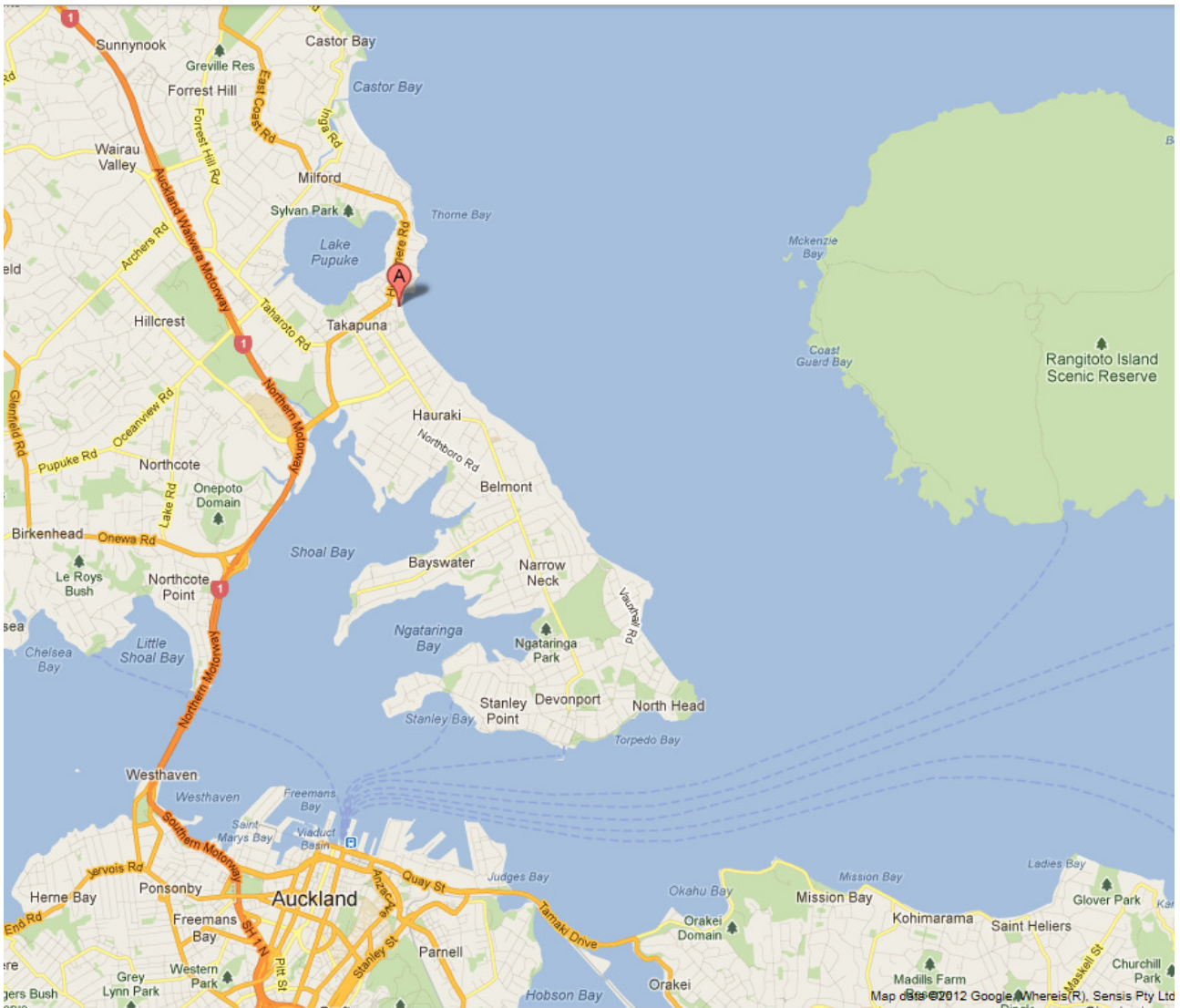
Fax: +64 9 486 0747

email: sailing@takapunaboating.org.nz

web-site: <http://www.takapunaboating.org.nz>

APPENDIX A

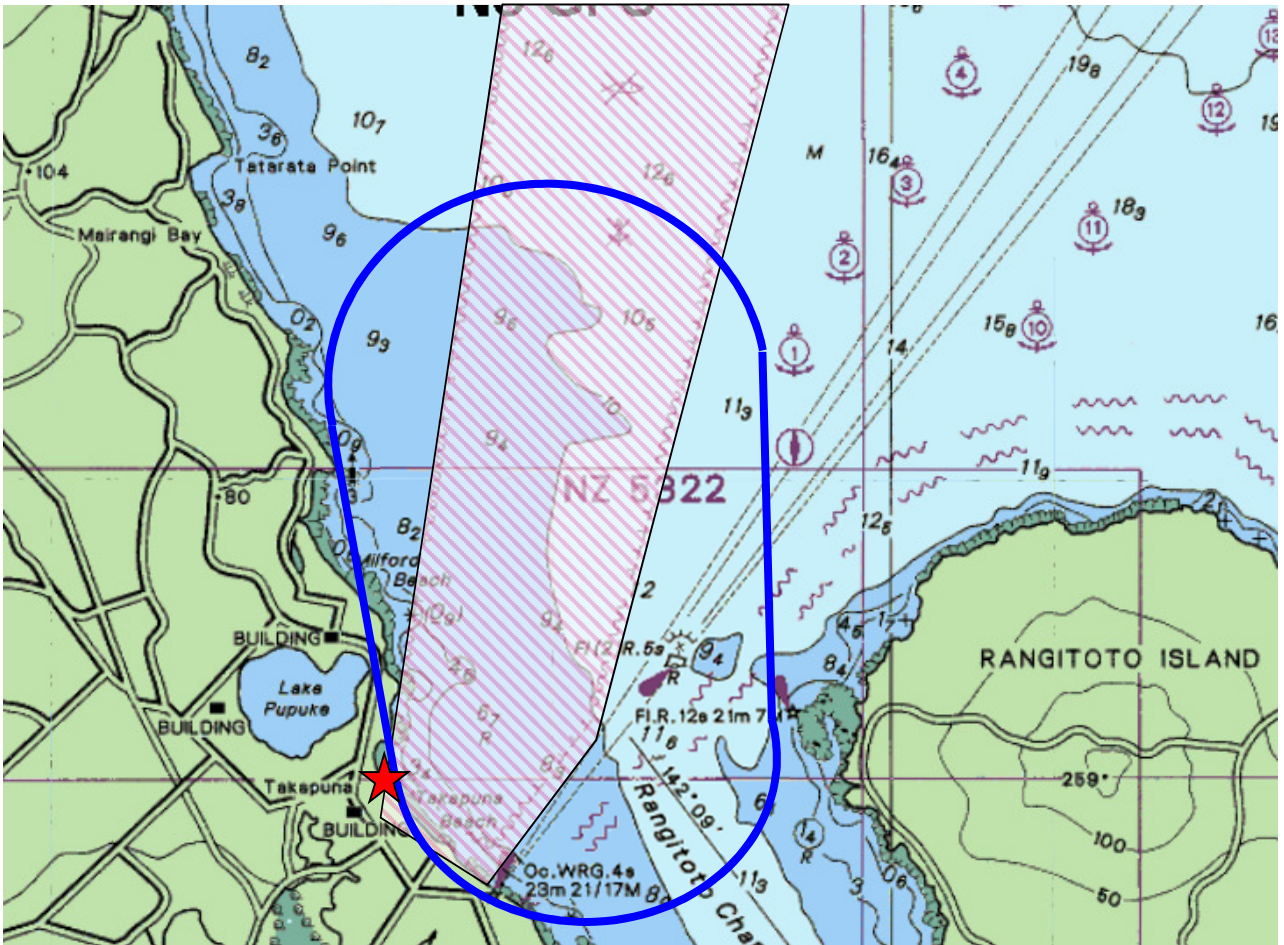
LOCATION OF TAKAPUNA BOATING CLUB



A Takapuna Boating Club location

APPENDIX B

APPROXIMATE LOCATION OF THE RACING AREA



★ Takapuna Boating Club location

○ Approximate course area

▨ Prohibited anchoring area